

SPRING 2019

FREE

LOCAL POSTAL CUSTOMER
NJ 08083

PRSRT STD
U.S. POSTAGE
PAID
Permit # 933
Bellmawr, NJ



SOMERDALE VOICE



INSIDE THIS ISSUE:

5 - The Mayor's Corner

7 - 2019 Event Dates

6 - Somerdale Youth Basketball League

12 - Camden County Senior and Disabled Services

7 - Somerdale Tour de Fish

13 - From The Desk of Police Chief Anthony Campbell

FIND PARKER O'DALE!



GARDEN GNOME SCAVENGER HUNT

April 15 - August 7

HOW TO PLAY:

Parker O'Dale will be hidden at different locations across town between April 15th & August 7th. Find Parker, snap a selfie with him & send it to ***Somerdale90@somerdale-nj.com*** along with your name, selfie date, and selfie location.

Do NOT remove or move the gnome from where you found it!

CLUES:

A new clue will be posted each week on the official Somerdale Facebook page: www.facebook.com/crossroadssouthjersey
Like and follow us to stay on the hunt!



Every photo counts as one entry into the drawing. Only one photo may be submitted per person per location.

Send photos from all locations for an additional five bonus entries!
Winners are chosen via Third-Party Draw Service & must verify Somerdale residency.

Compete for your chance to win a \$100 bank gift card!

Age groups:

- Under 13
(must be accompanied by a parent or guardian in the photo)
- Ages 14 to 17
- 18 and above

WIN!



Happy Birthday Somerdale!
Who Are The Oldest Residents In Somerdale?

As we celebrate our 90th birthday, we would also like to take this time to celebrate the lives of our oldest residents.

On Wednesday, May 1st, we will be having a Birthday Party at the Somerdale Fire Company from 7:00 pm to 9:00 pm. All residents are welcome. We would like to extend a warm invitation to our oldest residents so that we may congratulate them, share stories, and include them in our celebration.

If you, or someone you know, are in their golden years and may be the oldest resident in Somerdale, please let us know who you are so that we can reach out to you.

You can call Borough Hall at 856-783-6320 and give your contact information and age to Karen Wharton, at ext. 1300.

***SOMERDALE FIRE
DEPARTMENT NEWS***

As we enter the second quarter of 2019, your Somerdale Fire Department has been very busy answering over 100 calls and performing well over 400 hours of training. Also know that we are working very closely with our neighboring departments in Stratford and Hi Nella, with alternating duty crews and with joint training. This increases our manpower and makes everyone better prepared to work together.

Anyone who is interested in becoming a member of the Somerdale Fire Department should stop by the Fire House, located at Park & Hilltop Aves., any Monday night and see for yourself what we do. The age requirements for the Department are: 16 years old for a Junior Firefighter and 18 years old to become a Senior member.

EASTER FLOWER SALE

***Please come out and support the
Somerdale Fire Department's Annual Flower Sale***

Thursday, April 18th. Thru Saturday, April 20th.

HALL RENTALS

**Hall Rentals are available at very reasonable rates.
Call our Rental Agent at 856-783-9412 and leave a message.**

Borough Contacts

Hours: Monday – Friday 8:30 am to 4:30 pm

Construction Office – Monday – Friday 8:30 am to 4:30 pm

Court Sessions – please call for exact date & time

Municipal Clerk	856 783-6320 x 3300
Council	856 783-6320 x 3300
Construction Office	856 783-4629 x 1500
Finance Officer	856 783-6320 x 1600
Fire Prevention Bureau	856 783-6320 x 2100
Mayor’s Office	856 783-6320 x 1700
Municipal Court	856 783 0958 x 2200
Nuisance Officer	856 783-6320 x 2100
Police Department	856 783-4900
Police Department Records	856 428-6320 x 2500
Public Works	856 783-4648
Tax Assessor	856 783-6320 x 1400
Tax Collector	856 783-6320 x 1200 or x 1900
Vital Statistics	856 783-6320 x 1300 or x 3300
Zoning Officer	856 783-6320 x 1100

Regular Meetings:

Council Work Session - Every Monday 6PM (if needed)

Caucus - 2nd Wednesday of the month, 6PM

Council - 2nd Wednesday of the month, 7:30PM

Planning/Zoning Board - Last Wednesday of the month, 7PM

MAYOR AND COUNCIL

Mayor Gary J. Passanante
gpassanante@somerdale-nj.com

Council President David Alexander
dalexander@somerdale-nj.com

Councilman George C. Ehrmann
gehrmann@somerdale-nj.com

Councilman Larry Sefchick
lsefchick@somerdale-nj.com

Councilman Edward Kain
ekain@somerdale-nj.com

Councilman George Badey
gbadey@somerdale-NJ.com

Councilman James Perry
jperry@somerdale-nj.com

NATIONAL NIGHT OUT 2019

Hello Everyone!

This year's National Night out will be on Tuesday, August 6th, 2019.

Once again, we will be joining Lawnside and Magnolia at the "Lowe's" in Lawnside.

Last years event was a success and was heavily attended.

We are in the stages of planning this year's event and we are making improvements and additions.

We appreciate all you do for the community and hope that you will join us again this year.

When you have an opportunity, please drop me a line to let me know if you are interested in participating/volunteering this year. We could really use more help this year.

Thanks!

Somerdale Neighborhood Watch,
105 Kennedy Blvd., Somerdale, NJ 08083-1018
office (856) 428-6324 ext #2500
fax (856) 783-6863 | neighborhoodwatch@somerdale-nj.com



PET WASTE POLLUTES OUR WATERS

What You Can Do To Help Protect Our Water

Clean and plentiful water is important to our families, our environment, our economy and our quality of life.

Did you know that animal waste from pets can pollute our waters? When left on the ground, pet waste is washed by rain and melting snow and ice into storm drains that carry it to our rivers, lakes, the ocean and drinking water.

Animal waste contains a high concentration of nutrients as well as bacteria and disease-causing microorganisms that can cause problems.

What you can do

Pet owners or anyone who takes your pet for walks must properly dispose of the waste by picking it up, wrapping it and either placing it in the trash or flushing it unwrapped down the toilet.

Your municipality is required to adopt and enforce local pet-waste laws. At a minimum, your community must require that pet owners or their keepers immediately and properly dispose of their pet's solid waste deposited on any public or private property not owned or possessed by that person. People with assistance animals such as Seeing Eye dogs are exempt.

Make sure you know what your municipality requires – and follow it.

Thank you for doing your part to keep New Jersey's waters clean.

For more information, please contact the following:

New Jersey Department of Environmental Protection Division of Water Quality
Bureau of Nonpoint Pollution Control | Municipal Stormwater Regulation Program
(609) 633-7021

Visit www.njstormwater.org or www.nonpointsource.org

Additional information is also available at U. S. Environmental Protection Agency Web sites www.epa.gov/npdes/stormwater or www.epa.gov/nps



Chris Christie, Governor
Bob Martin, Commissioner



BJ HARRISON & COMPANY, LLC

CERTIFIED PUBLIC ACCOUNTANT

- Tax Preparation Services for Individuals, Businesses, Estates & Trusts
- Bookkeeping & Accounting Services
- IRS & State Tax Representation

Licensed in New Jersey and Pennsylvania

Betty Jane Harrison-Marshall, CPA

phone: 856.258.5899 -OR- 856.546.4600
email: bj@harrisoncpa.com | fax: 866.865.4608
24 N. White Horse Pike | Somerdale, NJ 08083

Floss' Grooming



At Precious Pets

located at 5 E Somerdale Rd Somerdale NJ 08083

CALL NOW (856) 441-3099

\$5.00 OFF

MICRO BUBBLE
BATH

FREE

Nail Grind

KIMBERLY A. WILSON, Esq.

Specializing in consumer bankruptcy,
loan modifications, real estate &
seeking personal injury, worker's
compensation and disability clients.

**24 N. White Horse Pike
Somerdale, NJ 08083**

856-783-4440

wilson.schroedinger@comcast.net



Gary J. Passanante

THE MAYOR'S CORNER

Greetings!

We survived another winter and I am so glad spring has arrived! As you prepare for the upcoming spring and summer seasons, please remember to maintain your grass and property out of respect for your neighbors and our community. As always, our code enforcement department will be monitoring properties throughout the municipality for any maintenance violations. Should you have a neighboring property that may have been abandoned and/or overgrown, please call or email our code enforcement department so that they may rectify the situation. Well maintained properties improve your curb appeal and make for a pleasant neighborhood environment.

Once again, I am extremely pleased to inform you that we continue to maintain a nearly flat local tax rate levy in our 2019 municipal budget. While the state law allows a 2% increase in the tax levy, we have only adjusted that levy by 0.004% which means the average home assessed at \$140,211 will only have a change in their local municipal tax of \$5.59 for the year (Less than our 2018 change)! Our continued economic redevelopment and fiscal management policies have allowed us to maintain a very stable tax rate environment while expanding our tax base and spreading the costs over more tax payers instead of increasing the cost to our existing base of tax payers. Our municipality's Net Valuation increased for the fifth straight year another \$3.4 million dollars. Our housing and commercial property values are on the rise! We are awaiting final numbers for the county and school tax levies for 2019 and will provide a detailed tax levy summary once their budgets have also been adopted. For more information on our 2019 Municipal Budget, please go to our website at www.somerdale-nj.com where you will find a link to our budget overview presentation.

Speaking of our website, we have just launched an all-new look and navigation for our website. When you get a chance, please check it out and let us know what

you think! There is an abundance of information on the site as well as on our Facebook page. Please take advantage of them as you will probably find the answers to most of your questions between the two online resources.

We completed the paving and landscaping on the new parking lot for our Community center and it looks great. This year's capital budget includes many street projects. We will be paving Hilltop from Dartmouth to Ogg Avenue, Evergreen Avenue from Hilltop to Atlantic Avenue, Gloucester Avenue from Park Avenue to Magnolia Avenue and Ava Avenue from Garden to Magnolia. Areas on Gloucester and Ava Avenues where no sidewalk and curb exist will have new ones installed. In addition, we will be paving/reconstructing segments on Willow Way, Columbia Avenue, Sylvan Road and Poplar Terrace. This new capital program will invest another \$3M in street and infrastructure improvements commencing this year alone!

We completed the surface renovations of the two basketball courts at the Perry Memorial Complex and the basketball court at Kennedy Playground Park. The new surfaces utilize cutting edge technology and are guaranteed to last for 16 years. You will not find courts like this anywhere in our area and the use of these newly renovated courts has risen dramatically.

Work has commenced on the new Reserve at Grace. Once all of the developer's county and state approvals are received, work should escalate rather rapidly. Clearing work has also commenced at property on the White Horse Pike and Evergreen Avenue. We will be announcing the final plans for that property in the near future.

As you can tell, it has been a very busy year already with much more to do. I hope each of you have a safe and fun-filled spring and summer! I look forward to seeing you at our upcoming events and town meetings.

SOMERDALE PARK SCHOOL "NEWS"

SPRING 2019

Let's say good-bye to Old Man Winter and Hello to Spring! This winter has been a wet one, but we are looking forward to the warmer weather and Spring activities at Somerdale Park School. Let's catch you up on what has been happening here are the Park.

Our students have participated in several fundraisers to help the community, The Cat in the Hat came to visit for Read Across America, the PTA sponsored many fun events, we held our DARE Graduation and the National Junior Honor Society had their Induction Ceremony. We would like to congratulate all the current and new members inducted in the NJHS.

The 2018-2019 Basketball Season had a few highlights. One, the Cavaliers made the playoffs. This was one of our team goals heading into the season. Two, we were able to develop several young players for the future of our program. The Boys basketball team had a record of 6 and 13, but the players remained positive and competed in every game. The team faced Merchantville in the quarterfinals, falling 51-43. This year's team is graduating eight 8th grade players. The 8th graders include Co-Captains Kristian Ruiz and Caleb Mundell, in addition to Andrew Vie, Andre Vie, Jack Borner, Eric Medina, Golden Stewart, and Nick Reitano. The Girls Basketball Team finished second in our division, but unfortunately lost in the first round of the playoffs. They finished with a record of 9 and 7. The graduating 8th graders include Captains Ailani Greelee, Natalie Medina, Alayah Rivera, and including players Maya Dunnings, Kim Nguyen, Tiara Prince, Alexis Burckley, and Amanda Burckley.

As May approaches, we start to prepare for the NJ Student Learning Assessment previously known as PARCC Testing. It is very important the students get plenty of rest and eat breakfast on these days. More information will follow regarding the testing dates. Our website is the best resource for up to date news, events and special announcements.

Somerdale Park School's Drama Club performed the play "Laffin' School" on March 13, 2019. Jokes! Jokes! Jokes! It's the classic situation. A young substitute teacher, Miss Quackenbush, turns up at the Little Red Schoolhouse and finds her class is comprised of the funniest pupils found anywhere. The previous teacher had a nervous breakdown. No wonder! With things like mice in lunch boxes and a student with the measles, anything more will drive you crazy! The students soon learn their lesson that "Nobody gets ahead in life by being a failure. To be successful they must work as a team and encourage each other to become a class of winners!" Actors and parents enjoyed the fun-filled play! Big thank you to Mrs. Reeder with the help of Ms. Horiates and Ms. McCleery in making this play a success.

The Baseball and Softball Teams are practicing as they get ready for another season, don't forget to come out and support them this Spring. A list of games and directions will be located on our website so remember to check for more information. Some events to look forward to in the coming months are, Kindergarten and Pre-School Registration, the Renaissance Wildwood Trip, 8th Grade Dinner Dance and 8th Grade Graduation. The Annual 8th Grade Auction and Talent Show that will be held on April 17, 2019. This event helps to raised money for the 8th grade class to fund their trip and dinner dance. Our chorus and band students will be holding their Spring Concert on May 20, 2019, it is sure to be a great night of music and singing for all to enjoy.

Please know we continue to appreciate the support and involvement shown by our parent community, and appreciate the support generated by the Somerdale community. We look forward to you visiting with us for our upcoming Spring events.

And finally, if at any time, any questions arise about the school or our educational programs, and/or you'd like to drop by and visit the educational facility, please don't hesitate to contact either myself, Mr. Mark Pease, Superintendent, Mr. Robert Ford, Vice-Principal, and/or Mr. Greg Cesare, CST Supervisor and schedule an appointment. We look forward to seeing you!

GO CAVS!

Summer League 2019

HOSTED BY: SOMERDALE YOUTH BASKETBALL LEAGUE

SYBBL



Pre-Registration: **June 1st - July 5th**
Time: 6:00pm - 8:00pm
Confirm Times Email: donnierob123@yahoo.com
Season: **July 8th - August 16th**
Time: 6pm Game - & - 7:30pm Game
Where: Sports Complex: Corner of Hilltop and Dartmouth Ave
Fee: \$40 (T-Shirt Included)

New: Courts, Lights,
Bleachers, Rims,
Benches, Supplies....

Highlights



Sybbl League



Founder Donnie Robinson needed a place for his son and friends to play basketball during the summer. With the help of local council members, that wish was realized in 2002, and the Somerdale Youth Basketball League (SYBBL) was born.

The organization consistently develops players who have played varsity at Sterling High School and college basketball, which includes Bloomfield College and Rutgers Camden.

Whether there's 15, 40 or 80 kids, who sign up, Robinson hopes to provide a positive experience for your child. Kids may sign up if they are in grades four-twelve and live within the Somerdale school district.

The SYBBL looks forward to another successful year of basketball!

SEASON HIGHLIGHTS:

Registration **Coach Assignments**
Game Schedules
Draft **Open Season Meet and Treat**
All Star Friday **3 Point Shooting Competition**
Banners **Sybbl Teams and Fans Pinic Flyers**
Special Presentations **Concession Table**
High School Game **SYBBL LEAGUE GAME**
Bring A Lawn Chair **Chinese Auction Table**
Fun!!!

FMI: DONNIE ROBINSON, donnierob123@yahoo.com

MAKE SURE YOU TELL ALL YOUR FRIENDS TO COME SIGN UP FOR THE LEAGUE!



EASTER EGGSTRAVAGANZA

Easter Egg Hunt - Thousands of Eggs
Lots of Candy and Prizes

11:45 AM, Saturday April 20, 2019
At Kennedy Blvd. Field

Sponsored by Park Avenue Community Church

SOMERDALE TOUR de FISH

Sunday, June 2, 2019



PRESENTED BY
FLYING FISH BREWING COMPANY, LLC & THE BOROUGH OF SOMERDALE



Bike races run from 8:30AM to 4:00PM
Enter the Kids & Citizens races at 1:00PM
Food trucks on site all day!



Flying Fish Tasting Room and Beer Garden opens at 11:00AM
J-Dogs Fire Station 5 in 1 bounce house for kids starting at 10AM
Proceeds benefit the ALS and ACS Foundations
Thank You for Your Support!



Borough of SOMERDALE
The Crossroads of South Jersey.
Celebrating 90 years!

For more information go to
www.bikereq.com/somerdale-tour-de-fish,
www.flyingfish.com & www.somerdale-nj.com!



RECREATION COMMISSION 2019 EVENT DATES

Memorial Day Parade
May 27th at 10 am

Parade begins at Sterling High School and ends
At the VFW on Kennedy Blvd.

Tour de Fish Bike Race
Sunday, June 2nd 8:30 am to 4 pm

Summer Concert Series
Every Wednesday in August at 6:30 pm

August 7th – Don't Call Me Francis
August 14th – Suitcase Murphy
August 21st – Xclusive Soul
August 28th – Secret Service

Somerdale Day on the Boulevard
Saturday, Sept. 7th at 10 am

Miss Somerdale Pageant
Saturday, November 16th at 7 pm

Christmas Tree Lighting at the Borough Hall
Wednesday, December 4th at 7 pm



PIZZA PARTY AT THE PARK - "NAME THE GNOME"

The Somerdale 90th Anniversary Committee threw a pizza party for Mrs. Botto's 2nd grade class. Students from all grades participated in the activity and submitted some awesome names for our "Name The Gnome Contest". Mrs. Botto and her 2nd grade students chose the name, Parker O' Dale, which was an immediate hit among our celebration committee. It was so nice to see all of the staff, Mr. Ford, and Mr. Pease stopped in to congratulate those 2nd graders. We would like to thank Mrs. Botto and her 2nd grade class, and all of the staff and students at Somerdale Park School for participating in our 90-year celebration.

Look for Parker O' Dale soon, he will be traveling all around town.

State-of-the-Art Dental Care That Will Make You Smile.

At Somerdale Family Dental Associates, we pride ourselves on providing state-of-the-art dental services in a warm and friendly environment. We look forward to treating your entire family to the best dental care in South Jersey. Call today for an appointment.

- General Dentistry
- Pediatric Dentistry
- Cosmetic Dentistry
- Dentures
- Bridges
- Fillings/Restorations
- Dental Implants
- Crowns
- Tooth Extractions

Francine B. Rebhun, DMD, Susan B. Trager, DMD
Millard M. Braunstein, DDS Emeritus

Creating Generation of Smiles



Somerdale

FAMILY DENTAL ASSOCIATES

www.somerdaledental.com

205 North White Horse Pike
Somerdale, NJ 08083
(between Evesham Rd. &
Somerdale Rd.)
856.783.3499

CLOTHING DRIVE

RAISING FUNDS FOR:

The Sterling Foundation Senior Scholarship Fund

We DO ACCEPT the following items:

- CLOTHING AND SHOES: All sizes (adult, youth, and baby), styles, and seasons of clothing and shoes (sandals, boots, sneakers, and dress shoes)
- ACCESSORIES: Including pocketbooks, purses, totes, school bags, backpacks, wallets, belts, ties, scarves, hats, gloves
- HOUSEHOLD LINENS: Blankets, bedspreads, comforters, quilts, bed sheets, towels, shower curtains, window curtains and draperies, tablecloths, and pillows
- SOFT TOYS: Stuffed animals and dolls
- HARD TOYS: (Smaller than 24"x24"x24") and GAMES
- HOUSEWARES: Kitchen, office, garage, decorative, and holiday items 24" or smaller

We DO NOT accept the following items:

- FURNITURE OR MATTRESSES
- ELECTRONICS OR APPLIANCES
- WET, SMOKE-DAMAGED, OR MILDEWED ITEMS
- BOOKS
- RECORDS



COLLECTION DATE, TIME, and LOCATION:

STERLING HIGH SCHOOL, 7 AM – 12 PM ON APRIL 30, 2019

Sterling High School: 501 S. Warwick Rd., Somerdale, NJ 08083

Please place items in tied plastic bags or sealed cardboard boxes

For more information – email Superintendent Mr. Mark Napoleon
(mnapoleon@sterling.k12.nj.us)



White Horse
Chiropractic Center

PHONE: 856-784-5700



White Horse Chiropractic Center
Stanley B. Piltin, D.C., F.A.C.O.

Board Certified Chiropractic Orthopedist

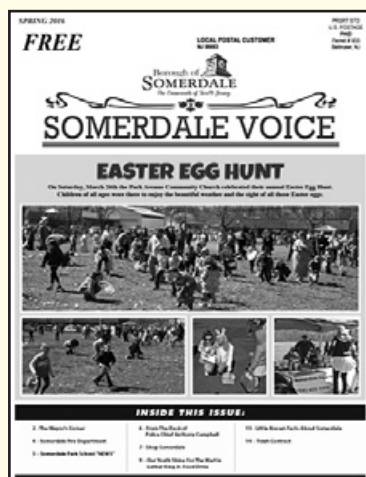
722 S. White Horse Pike, Somerdale

856-784-5700

Named Top Doc by New Jersey Monthly Magazine 2014 - 2018

Serving the community since 1982

www.whitehorsechiropractic.com



SOMERDALE VOICE

*Would you like to
advertise in the
Somerdale Voice?*

CONTACT:

gehrmann@somerdale-nj.com



Physical Therapy Health & Fitness



Kevin L. Laser,
P.T., C.K.T.P.



Jennifer L. Laser,
M.S.P.T., C.K.T.P.



State-of-the-Art Fitness Center Offering:

- ▶ General Gym Memberships
- ▶ **FREE** Fitness & Nutrition Assessments
- ▶ Personalized fitness programs by a licensed Physical Therapist
- ▶ **FREE 1-Month Trial Gym Membership**
 - * If you join within the trial period, get 50% off a 1-year gym membership or 10% off a 3 or 6-month membership
 - *** New Members Only

700 S. White Horse Pike
Somerdale, NJ 08083
(856) 504-6930
www.FastTrackPTnj.com

PHYSICAL THERAPY SERVICES:

- Orthopedics & Sports Injuries
- Return to Sport(s) Training
- Total Joint Replacements
- Neck & Back Injuries
- Arthritis & Osteoporosis
- Vertigo/Dizziness
- Balance & Gait Disorders
- TMJ Dysfunction
- Pre-/Post-Concussion Programs
- Worker's Comp & Auto Injuries

Fast Track is proud to offer
ADVOCARE Products.

With the safest products for weight management, energy, performance, and overall wellness, there is something for everyone!

Stop in for your
FREE sample of Spark
(energy/mental focus drink)
and to find out more about
these safe and effective
products.
Why not you!!!

ADVOCARE | Independent Distributor
www.advocare.com/15015835



www.sandovalgraphics.com

435-7320

printing@sandovalgraphics.com

9 Minnetonka Road • Hi-Nella, NJ 08083-2718



PRINTING COPIES • SIGNS POSTERS • BANNER VEHICLE LETTERING

AD BOOKS • ANNUAL REPORTS • BANNERS
BROCHURES • BUSINESS CARDS • CALENDARS
CATALOGS • DIRECT MAILER'S • ENVELOPES
FLYERS • INVITATIONS • INVOICES
LETTERHEADS • MEDIA ADS • MENUS
NCR FORMS • NEWSLETTERS • POSTCARDS
POSTERS • PRESENTATION FOLDERS
PROPOSALS • RAFFLE TICKETS • YARD SIGNS

...and More!



We **CUSTOM DECORATE**
APPAREL • EMBROIDERY
SILK SCREENING • VINYL APPLIQUE



**LEARN MORE.
DO MORE.
SHARE MORE.**



INTERNET ESSENTIALS™ FROM COMCAST

AFFORDABLE, HIGH-SPEED INTERNET

Internet Essentials gives you access to affordable, high-speed Internet. You may qualify if you have at least one child who is eligible for the National School Lunch Program, receive HUD housing assistance, or are a low-income veteran who receives state and/or federal assistance.

\$9⁹⁵
per month + tax

NO CONTRACT
NO CREDIT CHECK
NO INSTALLATION FEE
IN-HOME WIFI INCLUDED
ACCESS TO 40 1-HOUR
SESSIONS OF XFINITY WIFI
HOTSPOTS OUTSIDE THE
HOME EVERY 30 DAYS

APPLY NOW

InternetEssentials.com

1-855-8-INTERNET

**INTERNET
ESSENTIALS**
from Comcast

Restrictions apply. Not available in all areas. Limited to Internet Essentials service for new residential customers meeting certain eligibility criteria. Advertised price applies to a single outlet. Actual speeds may vary and are not guaranteed. After initial participation in the Internet Essentials program, if a customer is determined to be no longer eligible for the program and elects a different Xfinity Internet service, regular rates will apply to the selected Internet service. Subject to Internet Essentials program terms and conditions. WiFi Hotspots: Available in select locations. Requires compatible WiFi-enabled laptop or mobile device. Limited to forty 60-minute sessions per 30-day period per person/account. If session is terminated before 60 mins, remaining time expires. Unused time does not carry over to subsequent sessions or 30-day periods. Not responsible for lost data resulting from terminated Internet session or any other reason. A maximum of up to 10 devices may be registered to a single Xfinity WiFi On Demand account. May not be combined with other offers. Call 1-855-846-8376 for restrictions and complete details, or visit InternetEssentials.com. © 2018 Comcast. All rights reserved. 2400AFUMFLY-BIL-0818



**IF YOU USE TOO MUCH FERTILIZER ON YOUR LAWN,
YOU MIGHT AS WELL FERTILIZE THE STREAM.**

Rain washes pollutants into storm drains which flows directly into our streams, lakes, rivers and the ocean.

So what can you do?

**WHAT'S THE PROBLEM WITH
FERTILIZERS AND PESTICIDES?**

Fertilizers help plants grow by adding nutrients to the soil. Pesticides (including herbicides) are any toxic substances used to kill insects, animals or plants. If fertilizers or pesticides are improperly applied, they can wash off your lawn or garden into storm drains and directly to our lakes, rivers, and the ocean. These chemicals can contaminate your drinking water, as well as kill fish, wildlife and plants. Too much fertilizer washing into a lake can cause algae to bloom in lakes, which will affect swimming, fishing and boating.

YOU CAN HELP!

- Test your soil at your County's Rutgers Cooperative Research and Extension office, or buy a self-test kit.
- Use natural, slow-release nitrogen, or low phosphorus fertilizers.
- Look into natural alternatives to fertilizers and pesticides, such as integrated pest management (IPM).
- If you need to use fertilizers or pesticides, follow the instructions on the label on how to correctly apply.
- Do not apply fertilizers or pesticides before it rains. This will not allow the fertilizers or pesticides to penetrate through the soil.
- Use drought-resistant native plants in gardens; they require less fertilizer and less water.
- Use a mulching mower instead of bagging grass clippings.

**WHY SHOULD YOU CARE
ABOUT CLEAN WATER?**

Stormwater pollution is one of the greatest threats to New Jersey's clean water supply. Clean water provides access to safe drinking water, places for recreation, commercial opportunities, healthy wildlife habitats, and adds beauty to our landscape. Rain washes pollution from streets, parking lots, and lawns into storm drains, then directly to our streams, rivers, lakes and the ocean.

Did you know more than 60 percent of water pollution comes from things like motor oil, fertilizers, pet waste and detergents? By sharing the responsibility and making small, easy changes in our daily lives, we can keep common pollutants out of stormwater.



www.cleanwaterNJ.org



Thanks to the Washington State Department of Ecology,
King County, and the cities of Bellevue, Seattle and Tacoma.



**First Presbyterian
Church of Somerdale**

*Our mission is to glorify God by lifting up Jesus Christ
and proclaiming the Gospel.*

Sunday worship: 9:30 a.m. | Sunday School: 9:30 a.m.

(856) 783-5445 • fpcos@comcast.net

On the web: fpcos.us • On Facebook: [fpcosnj](https://www.facebook.com/fpcosnj)

142 West Somerdale Road, Somerdale, NJ 08083

SENIOR AND DISABLED SERVICES

Are you a senior citizen (aged 60 and over) or an adult (18 and over) with a physical disability that is looking for assistance with basic needs such as food, housing, and medical services? Or maybe you need to find someone to do some minor repair work around your home? Or perhaps you'd just like to find out about how to volunteer your time in the community, or where to go to socialize and have some fun?

The Camden County ADRC Division of Senior Citizen and Disabled Citizen Services can serve as your doorway to connect you with all of the above and more. The aim of this Aging and Disability Resource Connection (ADRC) program is to connect both seniors and adults with disabilities with a full range of the services –public and private– needed to independently live and thrive within their community. It also strongly supports each individual's right to be in control of making their own personal care decisions based on assessed need, informed choice and community service availability.

For more information disABILITIES and special needs events, call 856-216-2127



**SOMERDALE NEIGHBORHOOD
& BUSINESS WATCH**

We look out for each other

To join your Neighborhood Watch Contact

Deputy Chief James Walsh
428-6324 X 2700

Neighborhoodwatch@somerdale-nj.com

businesswatch@somerdale-nj.com

HEAR IT SEE IT REPORT IT

Non-Emergency Number 856-783-4900

ANY SUSPICIOUS BEHAVIOR, CALL 911

Camden County Senior and Disabled Services

ARE YOU A SENIOR CITIZEN? You may be entitled to the following services and programs at age:

55 YEARS

EMPLOYMENT
• Senior Community Service Employment Program
• Paid on the job training
• Free job placement • Classroom training

TAXES/TAX BENEFITS
When selling principal place of residence, up to \$125,000 of capital gain is tax-free on federal and New Jersey income taxes. Property tax deduction of \$250 for widow(er) of property owner.

VOLUNTEER PROGRAMS
Retired and Senior Volunteer Program: helping community agencies (Out-of-pocket expenses reimbursed)

60 YEARS

AREA AGENCY ON AGING
• Services Provided under Older Americans Act
• Congregate and Home-Delivered Meals
• In-Home services • Transportation
• Legal Assistance • Information and Referral Assistance
• NOTE: Income or other eligibility requirement

INCOME MAINTENANCE PROGRAMS
Partial Social Security/Railroad Retirement survivor benefits for widow(er). For widow(er)s remarrying, retention of Social Security benefits.

OMBUDSMAN FOR THE INSTITUTIONALIZED ELDERLY
Protection of rights for people in certain health facilities and investigation of complaints of abuse.

PUBLIC GUARDIAN FOR ELDERLY ADULTS
Guardian or conservator of last resort for elderly adults with no willing or responsible family members or friends who can serve in those capacities.

RECREATION, LEISURE, ENTERTAINMENT
Through Area Agencies on Aging, participants of professional and nonprofessional artists and sculptors in New Jersey Senior Citizens Annual Juried Art Contest, and Exhibition.

TAXES/BENEFITS
Assistance with preparation of federal and New Jersey income tax returns by trained tax volunteers at neighborhood locations.

VICTIMS OF CRIME COMPENSATION BOARD (ACT)
For victims of crimes, there is no out-of-pocket loss required before seeking compensation with the courts.

VOLUNTEER PROGRAMS
• Foster Grandparents Program: helping children with disabilities (small weekly stipend).

• Senior Companion Program: assisting frail elderly (small cash allowance).

62 YEARS

EDUCATION
Rutgers University: low cost, tuition-free courses on space available basis.

HOUSING/HOUSING SERVICES
• Eligibility for low-cost senior housing, and for Congregate Housing Services Program.
• Residents of multiple dwellings, rent grace of five days; protection against condominium conversion.
• NOTE: Income or other eligibility requirement

INCOME MAINTENANCE PROGRAM
80% Social Security/Railroad Retirement benefits for retirees. Social Security survivor benefits for parents of deceased workers.

RECREATION, LEISURE, ENTERTAINMENT
• Clam, Oyster Digging Licenses for \$2.00 processing fee.
• Free Senior Citizen Pass to New Jersey historic sites, recreation areas.
• Golden Age Passport to national parks, forests, historic sites, recreation areas for a lifetime fee of \$10.

TAXES/TAX BENEFITS
• Portion of pension exempted from New Jersey Gross Income Tax.
• Partial exemption of Realty Transfer Fee for homeowners selling home.

TRANSPORTATION
Reduced fare on all intrastate, and most interstate trains, buses.

65 YEARS

EDUCATION
Public colleges, tuition-free and reduced fee courses on space available basis.

COUNSELING ON HEALTH INSURANCE FOR MEDICARE ENROLLEES (C.H.I.M.E.)
Volunteer counselors assist Medicare enrollees of all ages with questions problems and claim forms related to Medicare, supplemental policies, and long-term care insurance.

HEALTH AND WELLNESS PROGRAMS
• Medicare and Medicaid
• Pharmaceutical Assistance to the Aged and Disabled (PAAD) Program: prescription for medication at low cost.
• Hearing Aid Assistance to the Aged and Disabled (HAAD) Program: partial reimbursement of cost of hearing aide.
• Community Care Program for Elderly and Disabled. (CCPED) Program: health and support service if not receiving Medicaid.

• Personal Needs Allowance (monthly): for residents of long-term care facilities, boarding homes, residential health care facilities.
• Medically Needy Program: medical care and services if not eligible for Medicaid.
• New Jersey Care Program: a special Medicaid program for persons unable to afford needed health care. Assistance with Medicare premiums, deductibles and co-payments.
• Specified Low-Income Medicare Beneficiary (SLMB); provides payment of Medicare Part B premiums for SLMBs whose income is slightly higher than New Jersey Care income guidelines.

HOUSING/HOME ASSISTANCE

LIFELINE Credit Program, assistance with utility bills.

INCOME MAINTENANCE PROGRAMS
• 100% Social Security/Railroad Retirement benefits for retirees. Social Security benefits increase annually for each year benefits are not claimed.
• Supplemental Security income to aid persons with low-income.
• Veteran’s pension.

INSURANCE
On automobile insurance policies, at least 5% reduction in charges for personal injury protection and liability insurance. NOTE: Income or other eligibility requirement

LEGAL SERVICES
For Medicaid-qualified applicants/patients, protection against discrimination by nursing homes, psychiatric institutions.

RECREATION
Hunting and fishing licenses at a reduced fee.

TAXES/TAX BENEFITS
• Increase in standard deduction on federal income tax.
• Tax credit for low-income elderly on Federal Income Tax
• \$1,000 additional exemption on New Jersey Gross Income Tax.
• For homeowners, \$250 Senior Citizen Property Tax Deduction.

70 YEARS

EMPLOYMENT
Freedom from being required to retire due to age. No Social Security restrictions on amount of income received from employment.

RECREATION, LEISURE, ENTERTAINMENT
Senior Citizens 70 and over need only show a driver’s license or other acceptable proof of age to fish free of charge. No application fee or license will be issued
NOTE: Income or other eligibility requirement

COMMUNITY SERVICE CAN BE FUN AND FULFILLING

Want to support your community but don’t know how? Trying to fill service hours for a class or organization? Consider the Somerdale Fire Department Ladies Auxiliary...our goal is to support our volunteer fire department in fun and fulfilling ways and the opportunities are endless. If you are interested in joining, finding out more about us, or looking for details on upcoming events, visit our Facebook page at www.facebook.com/SFDLadiesAux65

UPCOMING EVENTS INCLUDE:

PASSARIELLO’S DINE & DONATE
Friday, May 10 and Saturday, May 11
Dine in, take out and delivery. Just let them know your order is supporting the Somerdale Fire Department Ladies Auxiliary.

HOAGIE SALE
Saturday, April 27 and June 8
Hoagies can be pre-ordered for easy pick up.

TEXAS ROADHOUSE DINE & DONATE
Wednesday, July 10
We are also working on a bus trip to NYC, Game Night and Craft Night. Feel free to contact our Facebook page with any questions or suggestions.

FOOD FOR SOMERDALE

Somerdale is very fortunate to have four food pantries that operate within our community. There are many wonderful volunteers who donate their time and energy to staff the food pantries so that residents in our community never go hungry.

If you or anyone you know in need of assistance please contact any of these locations.

Somerdale V.F.W.
10 Kennedy Blvd. Somerdale, NJ 08083
Phone: 1-800-931-3371 • Hours: Every Tuesday 1:00 pm to 1:30 pm

Our Lady of Guadalupe - Saint Vincent de Paul Society
13 E. Evergreen Avenue Somerdale, NJ 08083
Phone: 856- 627-8824
Hours: 2nd and 4th Saturday of every month 12:00 pm to 2:00 pm

Lion of Judah Church
9 Odlen Ave. Somerdale, NJ 08083
Phone: 856-346-2636 • Hours: Every third Saturday of every month 10:00 am to 12:00 pm

Park Ave. Community Church Food Pantry
451 Hilltop Avenue Somerdale, NJ 08083
Phone: 856-435- 0309 (call for information)
Hours: Every Tuesday 11:00 am to 12:30 pm
Every Thursday 2:00 pm to 3:30 pm



FROM THE DESK OF POLICE CHIEF ANTHONY CAMPBELL

Dear Neighbors:

Thank God winter is over. I'm just one of those people that really dislike the cold, dreary weather. Bring on the warmth, I'm ready.

Unfortunately, with the warmth it also seems to breed the influx of door to door solicitors. We have really seen an uptick of this conduct in the past month.

I want to remind and encourage everyone to call the police (856-783-4900) if one of these solicitors should come to your door.

A solicitation permit is required and no outside business takes the time to do so. Furthermore, there are a number of illegitimate companies that prey on our seniors with hard, high pressure selling, duping them for thousands of dollars.

I also want to take this opportunity congratulate Lt. James Abbott on his recent retirement.

Lt. Abbott retired on December 31, 2018 after 30 years of dedicated service to the Somerdale Police Department and the Somerdale Community.

Lt. Abbott started with the Somerdale Police Department in 1989 as a Special Class II Officer. During his career, he has held the position of Patrolman, Detective, Sergeant and Lieutenant.

Most notable, he will be remembered for his over 20 years of dedicated service as the departments DARE Officer, teaching thousands of our children the hazards of drug and alcohol addiction.

Jim will now be able to enjoy the time off he has earned and concentrate on things that make him happy, like wood working, travel, building anything, continuing his dedication to the Somerdale Fire Company

and most importantly, spending time with his wife, daughters and grandchildren.

Please join me in congratulating Lt. James Abbott on his well-deserved retirement.



Remember, we are here to serve you, so if you see something suspicious please don't hesitate to call dispatch to report it at the non emergency number @ 783-4900, but of course if it is an emergency dial 911 right away.

Yours Truly,
Chief Anthony R. Campbell

Be ready for any **emergency**

Brought to you by the Camden County Board of Freeholders

camden county

Making It Better, Together.

Smart911 | Plan ahead to protect your loved ones

The Camden County Board of Freeholders is proud to announce the state's first county-wide **Smart911** system. The program will save critical time in emergency situations by providing vital information to emergency dispatchers and first responders.

Camden County residents are encouraged to create their free safety profile with Smart911 to have their information available to dispatchers and to receive emergency notifications. Smart911 is private and secure, and is only used for emergency responses, and only made available to the 9-1-1 system in the event of an emergency call.



Smart911™

Learn more and **create your safety profile** at camdencounty.com



GO DOWN IN SOMERDALE HISTORY

Advertise in the commemorative
90th Anniversary book!



1929 - 2019

Businesses:

Full page \$100

approx. 5" w x 8" h

Half page \$75

approx. 5" w x 3.625" h

Business card \$40

Residents:

Boosters \$10 per line
(individual or family name)

Advertising deadline: May 3, 2019

Send questions/artwork/text to
somerdale90@somerdale-nj.com

All checks made payable to the Borough of Somerdale
and mailed attention: Larry Sefchick.

Include "90th anniversary book" in check memo.

ABC TENDER HEARTS XYZ
PRESCHOOL & DAYCARE
107 PARK AVE • SOMERDALE, NJ 08083
856 435 3121



*"Developing creative minds
and growing tender hearts!"*

Individual Teacher/Student Attention
State Licensed to Teach
2 1/2 Years Old to Preschool Age
Loving & Friendly Atmosphere
Flexible Days & Hours



"HI SENIORS"

COME JOIN US AT OUR
SOMERDALE SOCIAL CLUB AT 110 HILLTOP AVE.

WE MEET EVERY MONDAY | 9:45AM TO APPROXIMATELY 2:30PM

• CARD GAMES ARE PLAYED • WE HAVE COFFEE, TEA, JUICE AND SODA.

CHARGE AT THE DOOR \$1.50

OPTIONS:

1) WE ORDER HOT SANDWICHES DELIVERED ADD \$1.50 2) BRING YOUR OWN LUNCH

FOR MORE INFO CALL DAVE @ (609) 405-1050

COMMUNITY CENTER RENTALS

The Somerdale Community Center, located on Hilltop Avenue Next to the Somerdale Little League fields, offers hall rentals for any special event.

There is a special pricing for Somerdale residents.

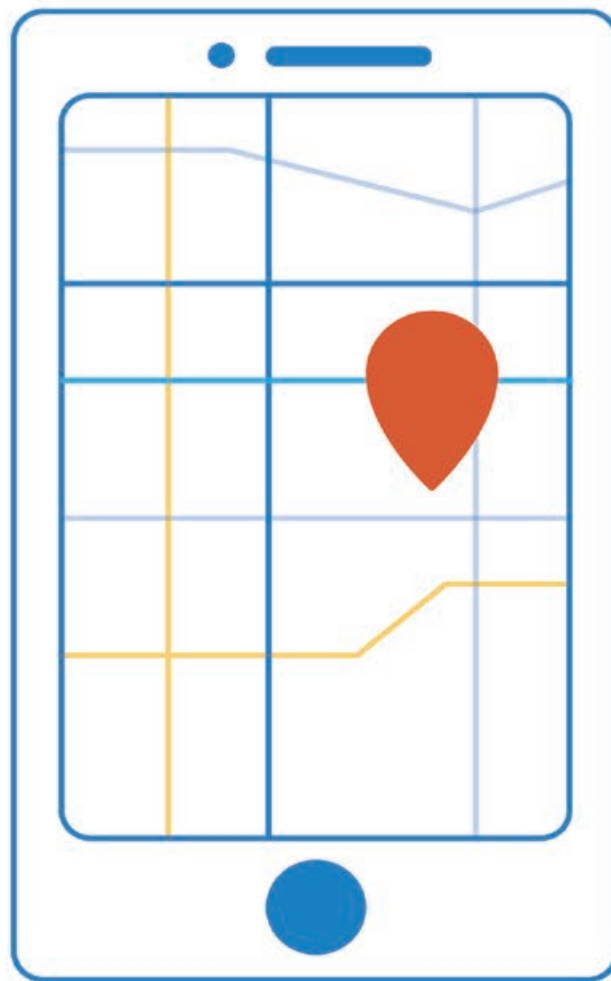
**For more information, please call 856.783.6320 ext. 3300
or email mmiller@somerdale-nj.com**



MEMBERS NEEDED / JOIN TODAY SOMERDALE EMERGENCY MANAGEMENT

The Somerdale Office of Emergency Management exists to serve the emergency needs of the community whether it is a natural disaster, major storm system, long-term power outages, chemical or hazardous material incident or terrorist threat.

For more information contact John O'Leary
Somerdale Emergency Management Coordinator at
em31652@aol.com or 609-790-9038



The doctor is always in at Inspira Urgent Care.

Somerdale location now open!

Open 7 days, 8 a.m. to 8 p.m. | 1 South White Horse Pike



*Get in line
Check wait times*

***inspira* HEALTH**

InspiraUrgentCare.org | 1-800-INSPIRA



NEXTEK

SOLAR AND ENERGY MANAGEMENT



What Makes Nextek Different?

Locally Owned • Honesty
• Integrity • Education •
Customization
Full Customer Interaction
and Experience

Make money with the Sun
Own your solar as almost 90% of our
Customers do!

Every one of our Solar Programs

- No investment needed/
immediate positive cash flow
- Save and pocket money that
you are currently spending
- Take control of rising energy
costs now and in the future

Already have solar or currently renting?
Join our Ambassador Program and earn money.

**We will put our money where
our mouth is!!!**

Nextek will pay your electric bills
from the day you sign until the day
your system is operational

Share and Like Us
on Facebook



856-371-1690 • 844-NEXTEK NOW

OWNER ALEX LUKACHER